

Once you are done your study notes you can make up your study cards (term on one side and answer on the other)

Make sure you know the following terms: Set up your paper like this

Term or Question

What are Fossils?

Why are only a tiny fractions of organisms preserved?

What is a fossil record?

What is a geologic time scale?

Where is the Oldest fossil in Canada? How old?

Textbook

What is relative dating?

Principle of Original Horizontality?

Principle of Superposition

Principle of Original Continuity?

Principle of cross-cutting?

relative Dating
Video notes

From TLE 2 Readings → Index Fossils / Types of Fossils

What are the 3 things that make a fossil an Index fossil?

What type of rock are fossils found in? Why can't they be found in igneous or metamorphic rocks?

What are the 6 types of fossil?

What does uniformitarianism mean?

Principle of inclusions

How has the fossil record provided us evidence for changes in biodiversity over geological time?

Review your cross sections of strata layers to know which one come first.

order

Oldest to youngest

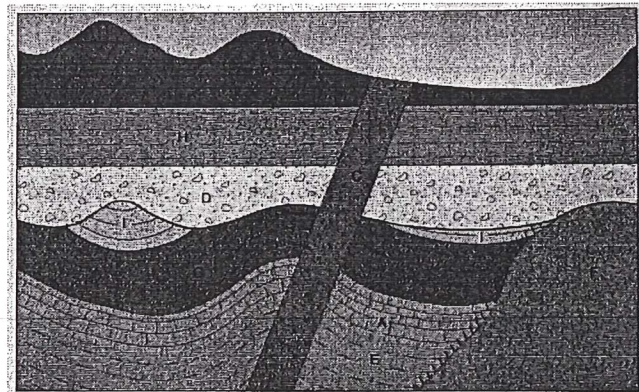
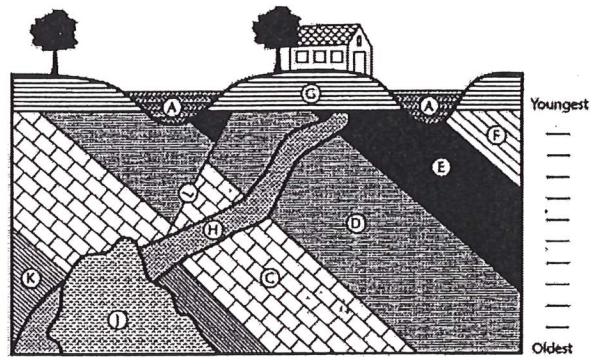
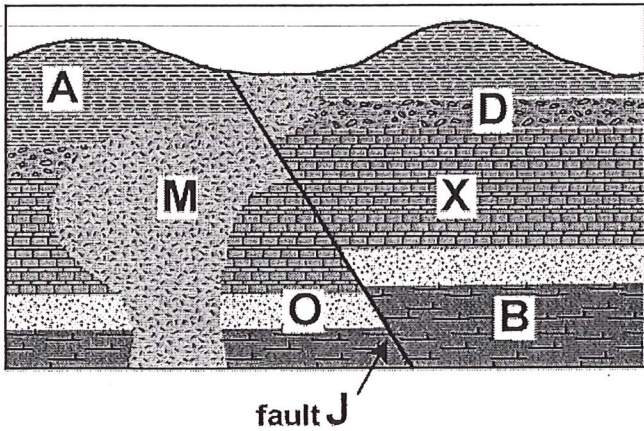


FIGURE 13.9